

May 8, 2024

## AI Workshop – Session 2

# AI Governance and Ensuring Implemented AI Tools and Systems Are Safe and Ethical



## Daisy Bennett

Associate General Counsel & Data Protection Officer at Instructure (4 years)

- Educational technology company
- Based in UT and majority of employees work remotely, including internationally
- Approximately \$530m annual revenue in 2023
- Roughly 1,200 employees
- Deploys its own AI tools and offers third party AI tools for use on its platform



## Elvia Gastelo

Director & Assistant General Counsel, Privacy & Data at Dollar Tree (1 year)

- American chain of discount variety stores
- Corporate HQ in VA (employees in the office) and roughly 16,000 retail stores
- Approximately \$30 billion annual revenue in 2023
- Roughly 193K full-time employees
- No consumer-facing GAI products. Focus is on employee and retail store use of AI products.



## Polina Zvyagina

Global AI Policy & Governance Director at Meta (3.75 years)

- Multinational technology conglomerate
- HQ in Menlo Park, CA with numerous office locations in the U.S. and abroad
- Approximately \$135 billion annual revenue in 2023
- Roughly 67K full-time employees
- Dozens of consumer-facing GAI products
- Open source large language model (Llama 2 / Llama 3)

# Session Overview

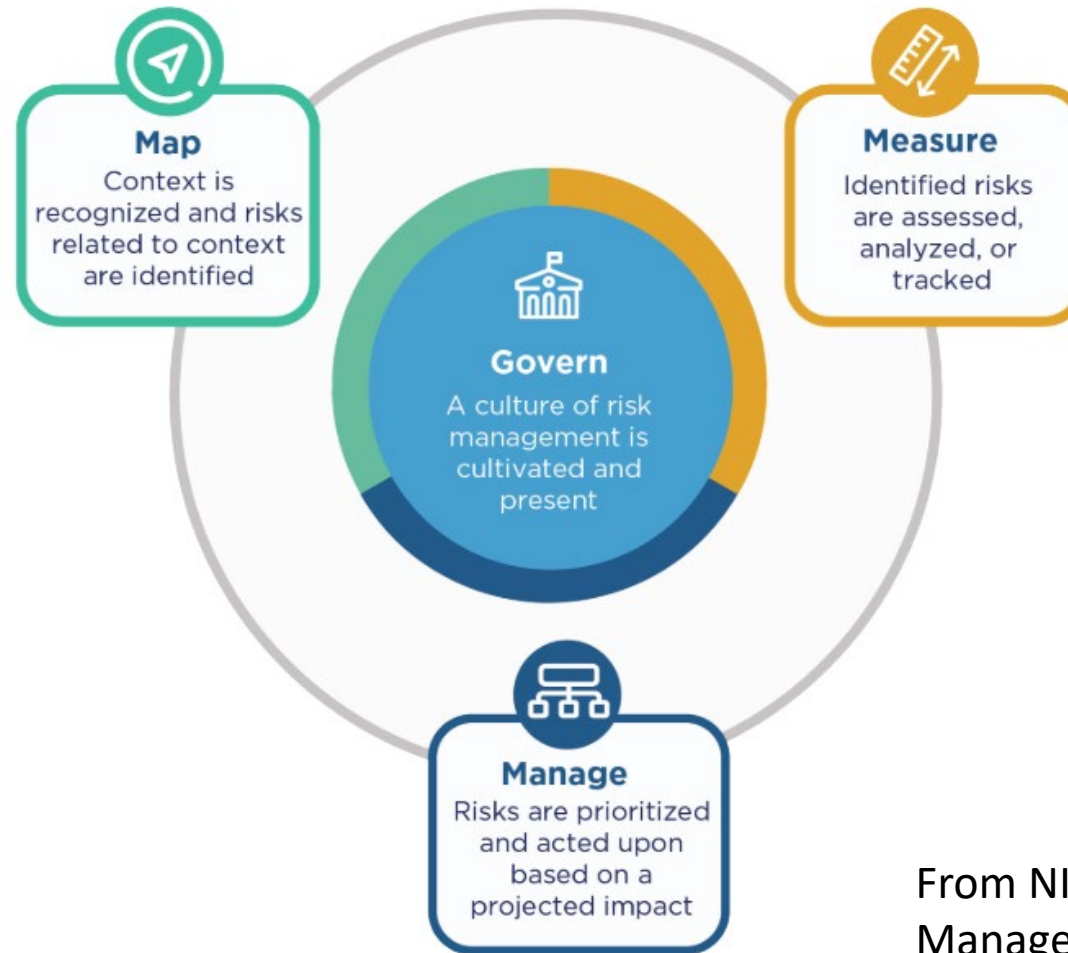
What is AI Governance?

When and how do you start an AI Governance program?

Mapping AI Tools

Measuring and Managing AI Tools

Employee AI Policies



From NIST Artificial Intelligence Risk Management Framework (AI RMF 1.0)

# When and How to Start AI Governance Program?



Who to involve



Training



Culture



Corporate  
values



Corporate risk  
tolerance

# Mapping AI Tools



Technological understanding (how tool works, training data used)



Stakeholders



Risks and benefits



Business goals

## Measure

- Risk Management (approaches/metrics to measure AI risks)
- Quality Management (testing, logs/record keeping)
- Incidents

## Manage

- Allocate resources to mapped and measured risks
- Documentation

# Employee AI Policies



Background and  
purpose



Explanation of AI risks



Governance for  
employee AI use



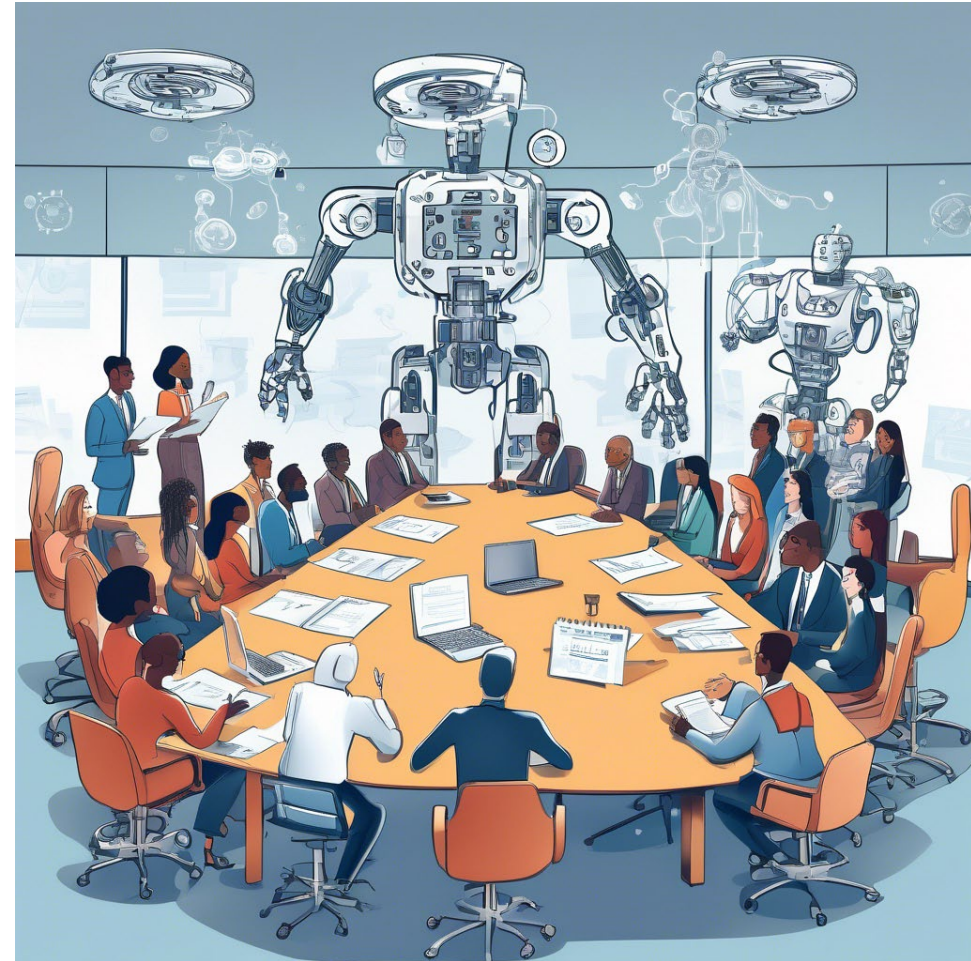
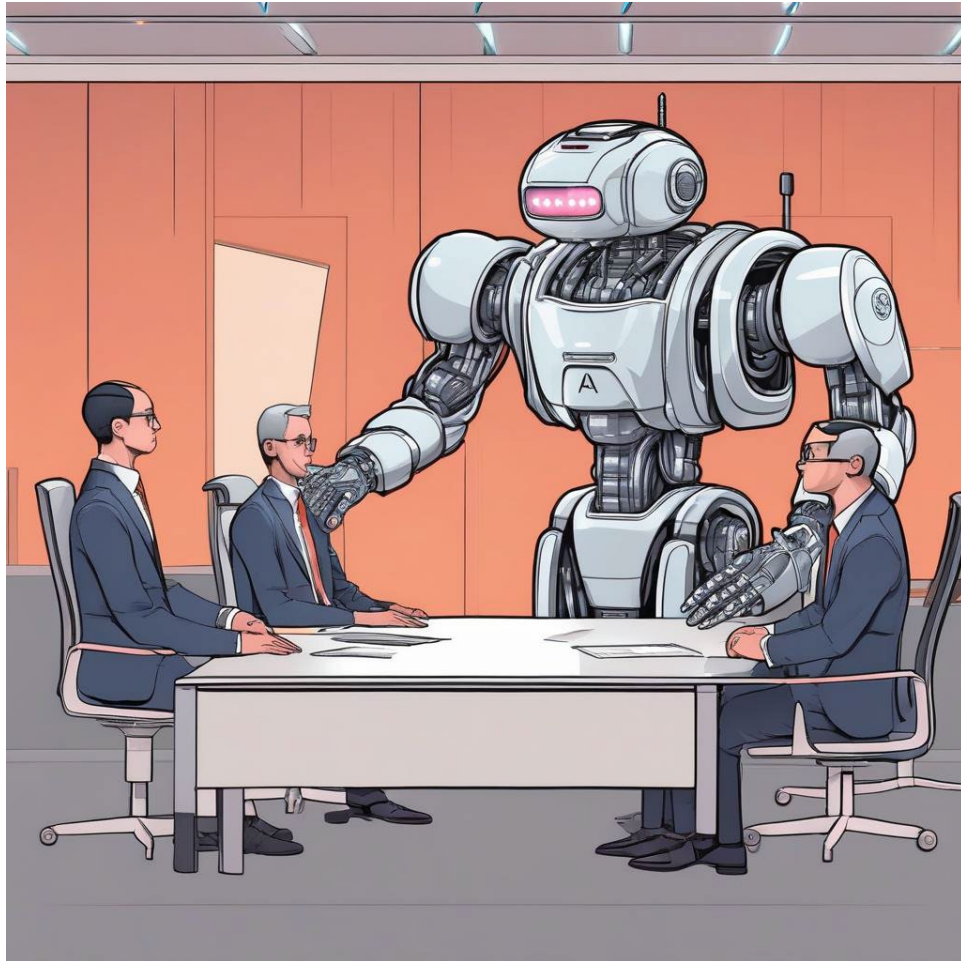
Rules and prohibitions  
for employee AI use



Incident response and  
review procedure



# Questions and Comments



# Thank you!



## Daisy Bennett

Associate General Counsel &  
Data Protection Officer  
Instructure



## Polina Zvyagina

Global AI Policy & Governance  
Director  
Meta



## Elvia Gastelo

Director & Assistant General  
Counsel, Privacy & Data  
Dollar Tree



## Jenny Colgate

Partner  
Rothwell Figg